



Marquette County Conservation District
 780 Commerce Drive Suite B
 Marquette, MI 49855
 (906)226-2461 ext. 5

NON-PROFIT
 ORG.
 U.S. POSTAGE
PAID
 PERMIT #157
 Marquette, MI

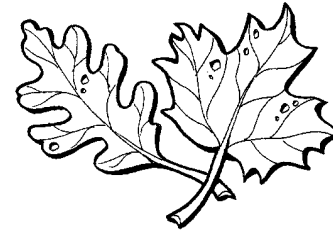
Orders for nursery stock will be filled on a first-come, first-served basis. Nurseries reserve the right to substitute species, size and stock. **Please return and send the completed order form, with a check, money order or visa card number payable to MCCD for the Grand Total to:** Marquette County Conservation District, 780 Commerce Drive, Suite B, Marquette, MI 49855. **Trees must be picked up on the dates specified.** The Marquette County Conservation District cannot guarantee survival of plant stock. It is unlawful for trees, shrubs and other plants to be resold with the roots attached (per PA 189 of 1931, as amended).

www.marquettecd.org

2008 Tree Sale Catalog & Order Form

Trees, shrubs, wildflowers, grasses, wetland plants, apple trees, books, planting aids and more!

Marquette County Conservation District



780 Commerce Drive, Suite B
 Marquette, MI 49855
 (906)226-2461 ext. 5
www.marquettecd.org

Order Deadline: April 7, 2008

Pick-up Dates: May 2nd and 3rd

Friday, May 2nd: 4:00 p.m. to 7:00 p.m.

Saturday, May 3rd: 9:00 a.m. to 12:00 p.m.

Tree sale pick-up is tentatively scheduled to be at the old office building; 1030 Wright Street, Marquette (in the back garage).

If you are interested in volunteering time to sort, pack or distribute trees anytime from April 29th through May 3rd please contact us.

Post card reminders will be sent this year.

We accept Visa and Mastercard!





The Marquette County Conservation District (MCCD) Board of Directors and staff would like to thank the residents in Marquette County for continued support of our natural resources through restoration and conservation practices.

The annual tree sale is the largest fund raising event for MCCD. Providing quality seedlings at the best price is a priority. All proceeds are put back into MCCD programs to better serve county residents. MCCD's goal is to provide for the conservation and restoration of resources in Marquette County through forestry and wildlife practices, watershed management, native plants, soil erosion control programs, groundwater stewardship and education. Our programs are free or low cost to all Marquette County residents.

In March 2007 MCCD's base operating budget was cut by almost half. In October of 2007 state budget cuts eliminated our Forestry program. In order to keep our doors open and continue to provide quality, no cost programs to our residents we must rely heavily on tree sale proceeds. Besides purchasing trees and shrubs from our annual tree sale residents can support stable funding for conservation district's by contacting our legislators.

Governor Jennifer M. Granholm
(517)373-3400

Steve Lindberg, House
(517)373-0498

UP Governor's Office
Matt Johnson
(906)228-2850

Mike Prusi, Senate
(517)373-7840

Mike Lahti, House
(517)373-0850

If you have questions on which trees, shrubs, wildflowers, or grasses will fit your habitat please contact us at 226-2461 ext. 5, or visit our website at:

www.marquettecd.org

Thank you for supporting your local Conservation District!

We are an equal opportunity employer and program provider.

MORE GREAT STUFF



Bat House (single-chamber)

Made of plywood and metal. Measures 24" x 26" x 1-1/2". Holds more than 100 bats. \$50.00



Bat House (four-chamber)

Made of plywood and metal. Measures 17-1/2" x 31" x 5". Holds several hundred bats. \$110.00



Moose Lodge Birdhouse

Moose Lodge birdhouse is a great locale for birds to meet and mingle! Wood "chimneys" and porch rails provide playful perches. Wood. 9-1/2" x 4-3/4" x 8" high. \$20.00

Hollow Log Birdfeeder

Double-duty birdhouse/birdfeeder resembles a hollow log home; blends well with foliage to give timid birds privacy. Wood, 7-1/8" diameter x 9-1/2" high. \$10.00



Compost Bin

Adjustable capacity from 1 to 3 feet. 29" high. Natural UV inhibitors. Lightweight and easy to move. Easy assembly—includes zinc-coated metal screws. Excellent ventilation holes for maximum aeration. \$25.00

MORE GREAT STUFF

Five piece Brochure Set

Set includes:

- Your Landscape and Our Natural Areas
- Native Vines, Grasses, Rushes, Sedges, and Ferns
- Native Trees
- Native Shrubs
- Native Wildflowers of Michigan's Upper Peninsula.

\$2.50 per set



A variety of topics including:

Hummingbirds, Bird Garden, Water Garden, Understanding Bats, Backyard Bird Watcher's Answer Guide, Backyard Birds and Enjoying Purple Martins More. Each book is 32 pages and includes color photos. \$2.50 each



Locally native wildflower seed

A variety of species are available year round.
 Garden Mix \$6.00
 Single Species \$4.00
 (refer to page 6)



2006 Marquette Road Atlas

Includes color air photos, road address ranges, Lat/Long grid, subdivision, public lands, detail insets, up-to-date roads, snowmobile trails, Township/Range/Section, trails, lakes and streams and much more. \$45.00

Conifer/Evergreen Tree Seedlings

Conifer Guide:

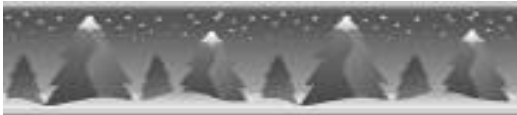
Conifers are planted for a variety of reasons, including windbreaks and shelterbelts, wildlife corridors, plantations and screens. Conifer seedlings are smaller and less expensive than transplants—a good choice for large plantings. Transplants are a bit taller and much sturdier but a little more difficult to plant. They are an excellent choice for screens and windbreaks. The numbers listed in parentheses () represent the age of the tree. The first number indicates the number of years spent in a seedling bed; the second, the number of years in a transplant bed. A (2-1) transplant is 3 years old, having spent two years in a seedling bed and one year in a transplant bed.

Red Pine, *Pinus resinosa*, is native to Michigan and provides winter food for birds and other wildlife. Fast growing (up to a foot plus per year once established) reaching heights of 50-80' when mature. Considered a long lived tree, it is shade intolerant and grows best on well-drained sandy loam soil. Excellent tree for reforestation on sandy sites. Important timber tree with distinctive reddish bark.

Jack Pine, *Pinus banksiana*, is native to Michigan and an important pioneer species in building up depleted sites. Moderately fast growing reaching heights of 30-50' when mature. Needles are 1-2", yellow-green in "twos". Shade intolerant tree growing best on moist to dry sand and loam soils. Characteristic of excessively drained, dry sterile, acidic soils but sometimes found on moister soils.

White Pine, *Pinus strobus*; is native to Michigan and is a large, moderately fast growing tree reaching heights of 60-90' plus when mature. Foliage is long fine blue-green needles in "fives". Used in reforestation and windbreaks it also attracts turkeys and hummingbirds. Plant in partial shade to discourage white pine weevil. Tolerates a broad range of soil types.

Quantity	25	50	100	500	1000
Red Pine, (2-0) 6-12"	\$11.00	\$19.00	\$32.00	\$135.00	\$170.00
Red Pine, (2-0) 12-18"	\$12.00	\$20.00	\$35.00	\$150.00	\$230.00
Jack Pine, (2-0) 6-12"	\$10.00	\$18.00	\$30.00	\$120.00	\$155.00
Jack Pine, (2-0) 12-18"	\$11.00	\$19.00	\$32.00	\$135.00	\$170.00
White Pine (2-0) 6-12"	\$11.00	\$19.00	\$26.00	\$135.00	\$170.00
White Pine (2-0) 12-18"	\$12.00	\$20.00	\$35.00	\$150.00	\$230.00



Conifer/Evergreen Tree Seedlings & Transplants

Balsam Fir, *Abies balsamea*; is native to Michigan and is a small to medium sized tree growing in cold, moist climates. Grows up to 60'. Needles are 1/2—1" and dark green. Soft wood. Mainly used as cover for wildlife species. Used for pulp and Christmas trees.

NEW Hemlock, *Tsuga canadensis*; Large native tree. Up to 80' at maturity. Soft wood. Cool, moist acidic sites. Shade tolerant. Slow growing but long lived. Needles arranged in a spiral around the shoot.

White Spruce, *Picea glauca*; is native to Michigan and grows at a moderate rate reaching 60-75'. Grows best in moist to wet soils but tolerates dry soils as well. Full to partial sun. Needles are 1/2—1" and are bluish green. Soft wood. Used in windbreaks and reforestation.

Blue Spruce, *Picea pungens*; is native to the Western U.S. and grows slowly reaching 80-100' at maturity. Bluish needles. Used as windbreaks and specimen trees. Provides winter food. Full sun to partial shade.

Norway Spruce, *Picea abies*; is native to Europe and grows moderately fast in moist soils. Cones twice as large as white spruce. Heights of 50-70'. Wood is white, strong and fine grained. Used in windbreaks, for wildlife and specimen tree. Full sun to partial shade.

White Cedar, *Thuja occidentalis*; Native to Michigan with a slow growth rate reaching heights of 30-50'. Moist to loam soils in full sun to partial shade. Wood soft. Used as windbreaks, screens and wildlife food and shelter. Browsed by deer.

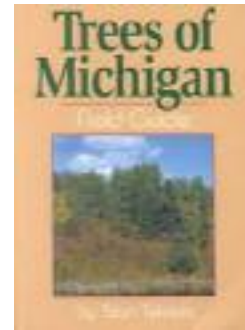
American Larch or Tamarack, *Larix laricina*; Native tree growing 40-65'. Grows slowly in swamps but rapidly on well drained soils. Shade intolerant. Produces small cones in the fall. Needles turn gold each fall.

Quantity	5	10	25	50	100	500	1000
Balsam Fir (2-0) 5-10"	N/A	N/A	\$15.00	\$26.00	\$47.00	\$210.00	\$370.00
Hemlock (2-0) 6-12"	N/A	N/A	\$40.50	\$76.00	\$143.00	\$665.00	\$1235.00
White Spruce (2-0) 8-12"	N/A	N/A	\$12.00	\$22.00	\$38.00	\$165.00	\$230.00
White Spruce (2-1) 10-16"	\$8.00	\$14.50	\$34.00	\$64.00	\$120.00	N/A	N/A
Blue Spruce (2-0) 8-12"	N/A	N/A	\$13.00	\$23.00	\$41.00	\$155.00	\$210.00
Blue Spruce (2-2) 8-14"	\$9.00	\$16.00	\$38.00	\$72.00	\$135.00	N/A	N/A
Norway Spruce (2-0) 8-12"	N/A	N/A	\$12.00	\$22.00	\$38.00	\$165.00	\$230.00
Norway Spruce (2-2) 10-16"	\$8.00	\$14.50	\$34.00	\$64.00	\$120.00	N/A	N/A
White Cedar 1-2'	\$11.00	\$19.00	\$45.00	\$84.00	\$158.00	N/A	N/A
Tamarack 1-2'	\$6.50	\$11.50	\$27.00	\$50.00	\$95.00	N/A	N/A



www.marquettecd.org

MORE GREAT STUFF



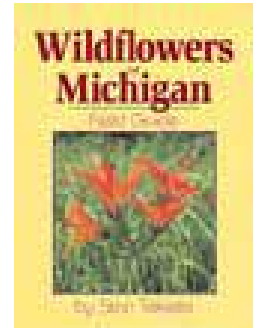
Trees of Michigan

Field guide. Paperback by Stan Tekiela. 236 pages. Color photos. Easy to read. \$13.00



Trees of Michigan

By Linda Kershaw. 272 pages. Includes 254 species of trees and tall shrubs from 36 families. Color reference guide. Easy to use. \$17.00



Wildflowers of Michigan

Field guide by Stan Tekiela. 200 of Michigan's wildflowers. Full-page color photos and descriptions, 412 pages. Easy to read format. \$14.00



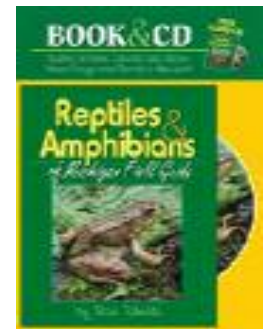
Birds of Michigan

Field guide. Paperback by Stan Tekiela. 112 Michigan species. Full color photos. 288 pages. Easy to use format. \$13.00



Dragonflies of the North Woods

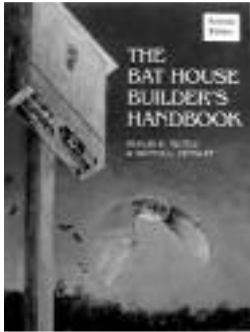
Paperback by Kurt Mead. 212 pages. Color photos. Detailed guide, easy to use. \$19.00



Reptiles and Amphibians of Michigan

Paperback field guide and CD set. Color photos. 144 pages. Turtles, snakes, lizards and more. Easy to follow. \$13.00

MORE GREAT STUFF



The Bat House Builder's Handbook

This 35 page book contains information on bats and plans to build your own bat houses. \$8.50

Landscaping for Wildlife

One hundred and forty-nine pages of information on which plant species to select and how to lay-out gardens to attract wildlife. Whether you are designing a small butterfly garden or installing a shelterbelt this book will show you how. \$15.00



Lakescaping for Wildlife and Water Quality

If you live on a lake or stream this is the perfect book to help you become a good steward. Solve lakeshore problems using a buffer zone. 175 pages. \$27.00

Woodworking for Wildlife

Build homes for birds and mammals using this book. One hundred and eleven pages includes plans for general houses and platforms, birdhouses, nest boxes, bat houses and more. \$15.00



Wild About Birds

If you're wild about birds this book is for you. Woodshop basics for bird feeder construction, feeder designs, problem animals at feeders, types of bird food and much more. 278 pages. \$27.00

Hardwood /Deciduous Tree/Shrub Seedlings

Shrubs and Trees for Wildlife Guide:

Hardwood shrubs and trees provide excellent food for a variety of songbirds. Some are also attractive to other wildlife species, such as deer and grouse. Most of the trees and shrubs listed in this catalog will do best when planted in full or nearly full sunlight. Be sure to fit the right plant to your soil type. The number listed in the table, after the tree name, represents the size of the tree at the time of pick-up. For a maximum wildlife benefit, plant a variety that will provide food throughout the year.

Red Oak, *Quercus rubra*; Native tree growing up to 60'. Moist to dry soils in full sun to partial shade. Hard wood. Produces acorns in the fall making them an excellent fall food. Relatively fast-growing, long lived tree. Foliage brownish-red in the fall.

Sugar Maple, *Acer saccharum*; Native hardwood tree grows to 75 - 100' at maturity. Colorful tree used for maple syrup. Fruit U shaped wings blooming in the fall with yellow flowers in the spring. Prefers moist, fertile, well drained clay to loam soils. Shade tolerant.

American Basswood, *Tilia americana*; Native tree. 60—80' at maturity. Prefers fertile well drained soil. Cool, moist woods with other hardwoods. Flowers are creamy yellow with 5 petals. Fragrant. Fast growing and long lived. Attractive. Mainly used for cover.

White Birch, *Betula papyrifera*; Also called paper birch. 50—65' native hardwood tree. Variety of soils and habitats. Often found on moist fertile open sites. Shade intolerant. Moderate to fast growing. Good summer food.

Yellow Birch, *Betula alleghaniensis*, Medium to large native tree. Hard wood. Grows up to 80' + at maturity. Leaves alternate and toothed. Grows best in rich, poorly drained soils. Moderately fast growing and long lived. Moderately shade tolerant.

Mountain Ash, *Sorbus americana*; Native small tree growing 12-21'. Slow growing, short lived. Moist soils or rocky sites. Moderately shade tolerant. White flowers with bright orange-red fruit. Excellent fall food for wildlife. Beautiful flowering tree.

Staghorn Sumac, *Rhus typhina*; Native shrub up to 20'. Dry to moist, infertile soils. Full sun. Scarlet berries in clusters. Excellent winter food. Good stabilization plant. Wide spreading root system. Short-lived but clones may be long-lived.

Quantity	5	10	25	50	100
Red Oak 1-2'	\$8.00	\$13.00	\$31.00	\$58.00	\$108.00
Sugar Maple 1-2'	\$10.00	\$18.00	\$42.00	\$78.00	\$147.00
American Basswood 6-12"	\$10.50	\$19.00	\$48.00	\$84.00	\$158.00
White Birch 1-2'	\$6.00	\$11.00	\$25.00	\$48.00	\$90.00
Yellow Birch 1-2'	\$12.75	\$23.00	\$54.00	\$102.00	\$191.00
Mountain Ash 12-18"	\$10.00	\$17.00	\$40.00	\$75.00	\$140.00
Staghorn Sumac 1-2'	\$9.00	\$16.00	\$37.00	\$70.00	\$132.00



www.marquettecd.org

Hardwood /Deciduous Tree/Shrub Seedlings

Michigan Holly or Winterberry, *Ilex verticillata*; Native shrub growing 9-13'. Swamps and wet woods. Flower greenish/yellowish with bright red fall fruit persisting into mid-winter. Full sun to partial shade. Moderately shade tolerant. Purchase a minimum of ten of these shrubs to ensure pollination.

Ninebark, *Physocarpus opulifolius*; Native shrub growing 6-8'. Broad range of soil types. Flower white, fruit light brown. Good summer and fall food for wildlife. Shade intolerant. Handsome when in flower.

Serviceberry or Juneberry, *Amelanchier canadensis*; Native small tree growing 10-25'. Flowers white with bright green foliage. Blue to black berries relished by grouse, songbirds and small mammals. Excellent summer food for wildlife. Dry to moist soils. Full sun but will tolerate some shade. Slow-growing, moderately long-lived.

Highbush Cranberry, *Viburnum trilobum*; Native shrub growing up to 12'. Will tolerate a high degree of shade once established. Broad range of soil types including wet clay sites. Prefers moist sites. Produces handsome clusters of white flowers with bright scarlet berries in the fall. Excellent winter food for ruffed grouse.

Black Chokeberry, *Aronia melanocarpa*; Native shrub growing 3-6'. White flowers with dark purplish to blackish berries. In autumn the leaves turn a bright red. Moist to swampy acidic soils but will grow on dry rocky sites. Good summer and fall food for wildlife. Moderately shade tolerant.

Nannyberry, *Viburnum lentago*; Native fast growing shrub. Grows up to 25'. Hard wood. Flower creamy white clusters with sweet edible bluish black fruit. Broad range of soil types, full sun to partial shade. Good winter wildlife food.

Red Osier Dogwood, *Cornus stolonifera*; Native shrub growing 1—10' at maturity. White flower with red to purplish branches and whitish berries. Moist soils with full sun. Excellent fall food for wildlife. Shade intolerant.

Sand Cherry, *Prunus pumila*; Native shrub growing 1-6'. Moist to dry well drained soils, tolerates hot, dry soil. Very hardy. White flowers with purple to black fruit. Good food source for wildlife in the summer and fall.

American Plum, *Prunus americana*; Native to Michigan. 20—25' small hardwood tree. Blooms April-May producing yellow to reddish fruit in the fall. Shade-intolerant. Prefers disturbed, open sites, edges of woods and particularly stream floodplains. Loam to sandy sites. Attractive ornamental. Relatively slow growing and short lived. Excellent summer food.

Chokecherry, *Prunus virginiana*; Native shrub growing 13-20'. Sandy/loam and poor soils. Full sun. Hard wood. White flowers with blackish-purple berries. Excellent summer to early winter food. Provides cover for wildlife.

Hazelnut or Filbert, *Corylus americana*; Native shrub growing up to 16'. Dry and moist open sites. Shade intolerant. "Flowers" are catkins with bud like clusters at the end of the twigs. Produces a nut in late summer.

Quantity	5	10	25	50	100
MI Holly 6-12"	N/A	\$21.00	\$49.00	\$92.00	\$171.00
Ninebark 1-2'	\$4.25	\$8.00	\$18.00	\$34.00	\$64.00
Serviceberry 1-2'	\$11.50	\$21.00	\$49.00	\$92.00	\$171.00
Highbush Cranberry 10-24"	\$8.00	\$15.00	\$34.00	\$64.00	\$120.00
Black Chokeberry 12-18"	\$7.00	\$13.00	\$28.00	\$45.00	\$67.00
Nannyberry 12-18"	\$8.00	\$15.00	\$34.00	\$64.00	\$120.00
Red Osier Dogwood 1-2'	\$5.00	\$9.00	\$21.00	\$39.00	\$72.00
Sand Cherry 1-2'	\$6.00	\$10.00	\$24.00	\$46.00	\$86.00
American Plum 1-2'	\$10.00	\$18.00	\$42.00	\$78.00	\$147.00
Chokecherry 1-2'	\$6.00	\$10.00	\$24.00	\$46.00	\$86.00
Hazelnut 1-2'	\$13.00	\$23.00	\$53.00	\$100.00	\$188.00

Apple Trees

Apple Tree Guide:

All of our apple trees are partially self-fruitful, but for best results we recommend cross-pollinating by planting more than one variety. An early bloomer will cross-pollinate another early bloomer or a mid-season bloomer. A late bloomer will work with another late or a mid-season bloomer. Mid-season bloomers will work with any early, mid or late season bloomers. All apple tree root stock offered should reach 15' at maturity. MM106 root stock is suited to our climate and is a heavy bearer with well anchored rootstocks. Bud 118 is recommended on dry, sandy soils, and for low temperature climates. All apple trees are ordered at a 5/8" caliper at a height of 4-6'. Root stock and caliper are subject to nursery substitutes. All apple trees are **\$16.00 each**.

Early Bloomers:

Redmax—Bud 118, Vigorous conventional tree that's productive year after year. More color reduces the need for second and third pickings.

NEW Liberty— MM 106, Fruit is mostly red striped over greenish yellow background. Flesh is nearly white, slightly coarse, crisp, and juicy. Flavor is sprightly, sub-acid and sweet.

Mid Bloomers:

Honeycrisp— Bud 118, The fruit is large and the skin is 50-90% red over yellow background. The flesh is cream colored and exceptionally crisp and juicy with a sub-acid flavor.

Wolf River—Bud 118, Large to very large size apple. Shape is round and sometimes flattened. Color is pale yellow to green with carmine red blushes and stripes.

NEW Granny Smith— Bud 118, A very late maturing, late keeping, dual purpose apple. Flesh is hard, crisp and juicy with excellent tart flavor. Fruit is grass green and shiny. In cooler growing areas, may develop a reddish blush.

Late Bloomers:

Gold Rush—MM 106, Late maturing yellow apple. Crisp texture. Cold stores up to 7 months.



Wildflowers/grasses (plugs/seedlings) Perennials, 4 pack for \$3.60. Pre-orders will not be taken at this time. Instead, a two day sale is scheduled for late May or early June. Watch our website, newspapers, flyers and local radio for sale announcement, plant photos and descriptions. Potential species include:



Black-eyed Susan, *Rudbeckia hirta*
 Columbine, *Aquilegia canadensis*
 Pearly Everlasting, *Anaphalis margaritacea*
 Common Milkweed, *Asclepias syriaca*
 Blazing Star, *Liatris aspera*
 Bee Balm, *Monarda fistulosa*
 Thimbleweed, *Anemone cylindrica*
 Little Bluestem, *Schizachyrium scoparium*
 Big Bluestem, *Andropogon gerardi*

Blue Iris, *Iris versicolor*
 Monkey Flower, *Mimulus ringens*
 Sweet Cicely, *Osmorhiza claytonii*
 Swamp Buttercup, *Ranunculus septentrionalis*
 Marsh Marigold, *Caltha palustris*
 Blue-eyed Grass, *Sisyrinchium montanum*
 Sand Violet, *Viola adunca*
 Early Meadow Rue, *Thalictrum dioicum*

Wildflower/grass species availability will depend on germination—keep your eyes on our website.

Aquatic/Wetland Plants

White Water Lily	5 for \$5.00 or 10 for \$8.00
Swamp Milkweed	5 for \$10.00 or 10 for \$18.00
Blue Iris	5 for \$7.50 or 10 for \$13.00
Pickereel	5 for \$14.25 or 10 for \$26.50
Sweet Flag	5 for \$5.25 or 10 for \$8.50



White water lily, *Nymphaea odorata*; Produces an attractive white, sweet-scented blossom 6" across. Leaves are 10—15" wide and float on the water surface. Prefers still lake backwaters, ponds, and sluggish streams. Grows in 1—5' of water with a fertile mud bottom. Blooms in summer.

Swamp Milkweed, *Asclepias incarnata*; Showy, tough 2—4' plant with a cluster of pink flowers. Fragrant. Prefers moist to wet humus rich soil with full sun but will grow in dry soils. Grows well in gardens. Attracts butterflies. Blooms June –September.

Blue Iris, *Iris versicolor*; Flowers violet or violet-blue. This plant is not fussy about soil types and does well in full sun or shady conditions. Thrives in wet meadows, ditches, marshes, pond margins and stream banks. Blooms in summer.

Pickereel, *Pontederia cordata*; An attractive aquatic emergent plant. Up to 3' tall. Single blade leaves are leathery, heart shaped and glossy green. Purple flowers in a spike opening only in the mornings. Blooms in late summer. Shallow ponds, stream edges and marshes. Tolerates sandy loam conditions. 1-3' of water.

Sweet Flag, *Acorus calamus*; An erect aquatic plant growing 2-4' tall. Sweetly aromatic. Tiny flowers are attached on a yellowish-green finger like spadix 2-3" long. Grass like leaves. Prefers saturated soils up to 1' of water but will tolerate a wide range of conditions.

Wildflower Seed— \$4.00 per pack for single species \$6.00 per Garden Mix per pack

Columbine—300 seeds per pack
 Black-eyed Susan—400-450 seeds per pack
 Coreopsis—200 seeds per pack
 Bee Balm—200 seeds per pack
 Garden Mix—800-1000 seeds per pack, garden mix includes;
 Black-eyed Susan, Coreopsis, Blue Aster, Bee Balm, and
 Columbine.

MCCD has a variety
 of native seed
 available throughout
 the year

Erosion Control

Beachgrass 250 culms for \$35.00
 500 culms for \$55.00

Ideal for controlling wind erosion along the lake shore and dunes.



Misc. Planting Items

Planting Bar \$26.00 each
 Marking Flags, 21" \$1.50 for 10
 Trees Planted/Keep Off signs \$1.50 each
 Terra-Sorb Root Gel \$1.00 per ounce (one ounce per 1,000 seedlings)
 Fertilizer Tablets \$2.50 for 25
 12" Tree protectors \$7.50 for 5

www.marquettecd.org

Mixed packets for Wildlife

Wildlife packets:

\$16.00 per packet—specify Wetland or Upland on the order form.

Wetland packet (Moist to wet soils) contains 2 each (10 total) of the following :

Highbush Cranberry	Red Osier Dogwood
Black/Common Elderberry	Staghorn Sumac
Black Chokeberry	

Upland packet (Dry to moist/well drained soils) contains 2 each (10 total) of the following:

Chokecherry	American Plum
Ninebark	Hazelnut
Sandcherry	



Berries:

Blueberry-1-2' low bush with white blooms and edible blueberries in the fall. Dry well drained, acidic soils, full to partial sun. Leaves turn red in the fall.

4" potted plant \$3.25 each

Blackberry—4-6' erect, thorny plant. "Prime Jim or Jan" variety. Pink or white flowers. Grows well in sandy, sandy loam and clay soils. Full sun is best. Pruning is recommended. Fruits are medium in size.

2.5" potted plant \$3.25 each

Raspberry—Up to 6'. Summer bearing red raspberry. White flowers in the spring. Sandy, sandy loam or clay loam soils. Plants are vigorous and reproduce through rhizomes. Full sun is best. Pruning is recommended.

4" potted plant \$2.00 each



Interested in receiving assistance to plant trees and shrubs, windbreaks and install other projects to prevent erosion, improve water quality and provide habitat for wildlife? Cost share dollars may be available to you through the USDA-NRCS' Wildlife Habitat Incentives Program (WHIP) or the Environmental Quality Incentives Program (EQIP). For more information, contact Becky Otto, NRCS District Conservationist, at (906) 226-2461, ext. 127.

www.marquettecd.org

